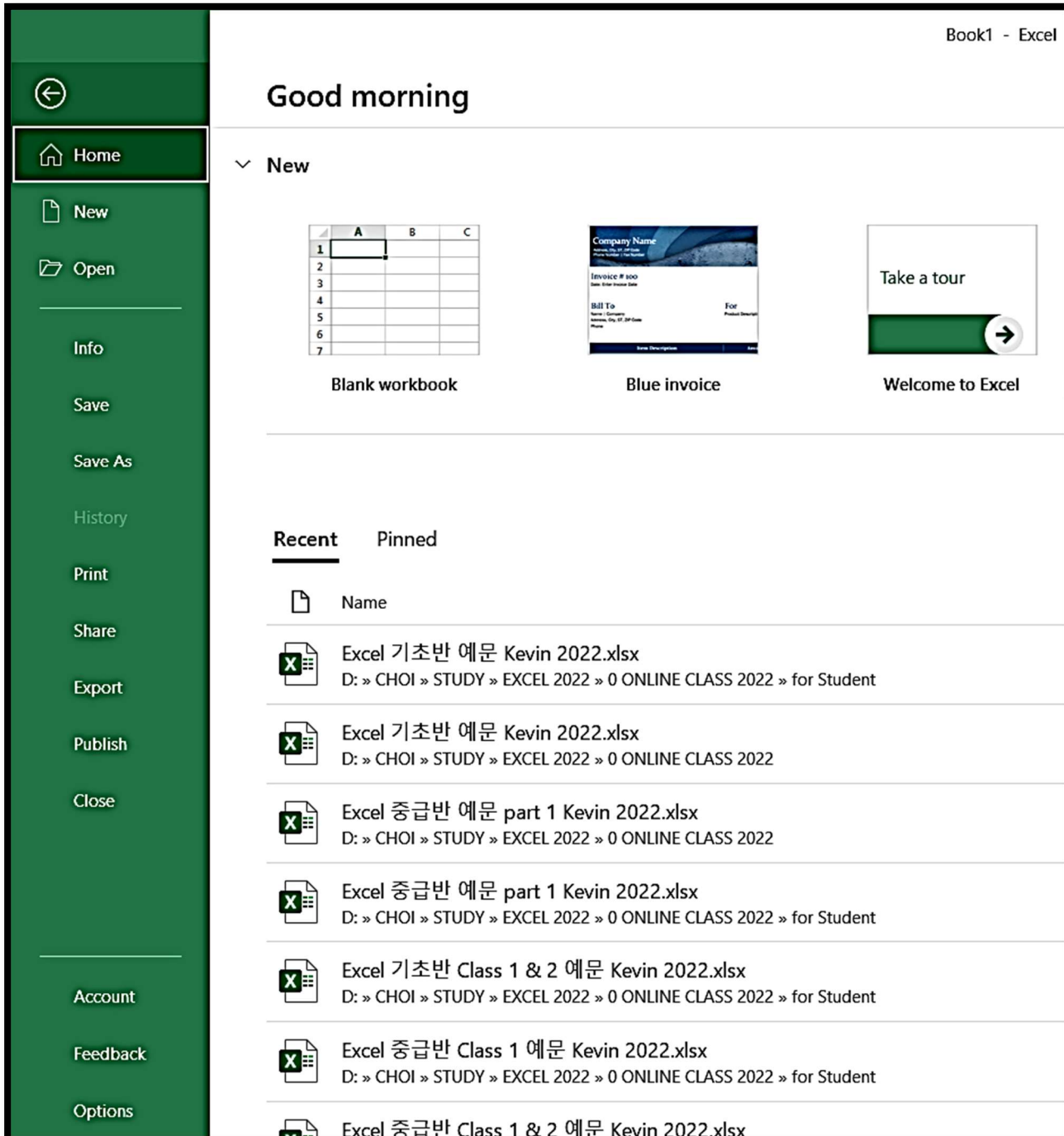


# EXCEL 한글 메뉴와 영어 메뉴의 비교

MS Office 의 메뉴는 여러 언어로 사용할 수 있습니다.

한글과 영어로 된 엑셀 메뉴를 비교해 봅니다.

처음 엑셀을 오픈 하면 열리는 화면입니다.





홈

새로 만들기

열기

정보

저장

다른 이름으로 저장

사용 기록

인쇄

공유

내보내기

게시

닫기

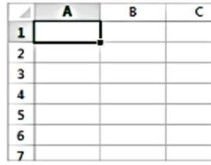
계정

피드백

음션

안녕하세요.

새로 만들기



새 통합 문서



Blue invoice



Welcome to Excel

최근 항목 고정됨

이름



Excel 기초반 예문 Kevin 2022.xlsx

D: » CHOI » STUDY » EXCEL 2022 » 0 ONLINE CLASS 2022 » for Student



Excel 기초반 예문 Kevin 2022.xlsx

D: » CHOI » STUDY » EXCEL 2022 » 0 ONLINE CLASS 2022



Excel 중급반 예문 part 1 Kevin 2022.xlsx

D: » CHOI » STUDY » EXCEL 2022 » 0 ONLINE CLASS 2022



Excel 중급반 예문 part 1 Kevin 2022.xlsx

D: » CHOI » STUDY » EXCEL 2022 » 0 ONLINE CLASS 2022 » for Student



Excel 기초반 Class 1 & 2 예문 Kevin 2022.xlsx

D: » CHOI » STUDY » EXCEL 2022 » 0 ONLINE CLASS 2022 » for Student



Excel 중급반 Class 1 예문 Kevin 2022.xlsx

D: » CHOI » STUDY » EXCEL 2022 » 0 ONLINE CLASS 2022 » for Student

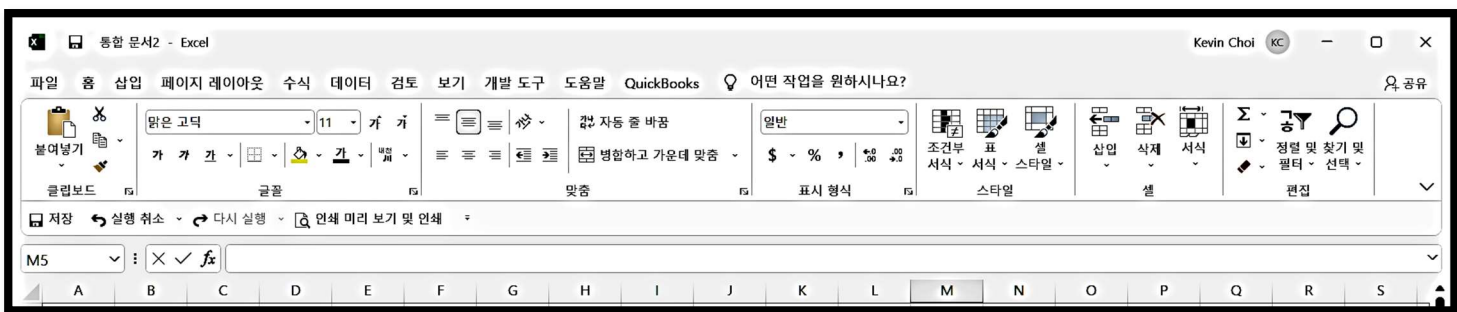
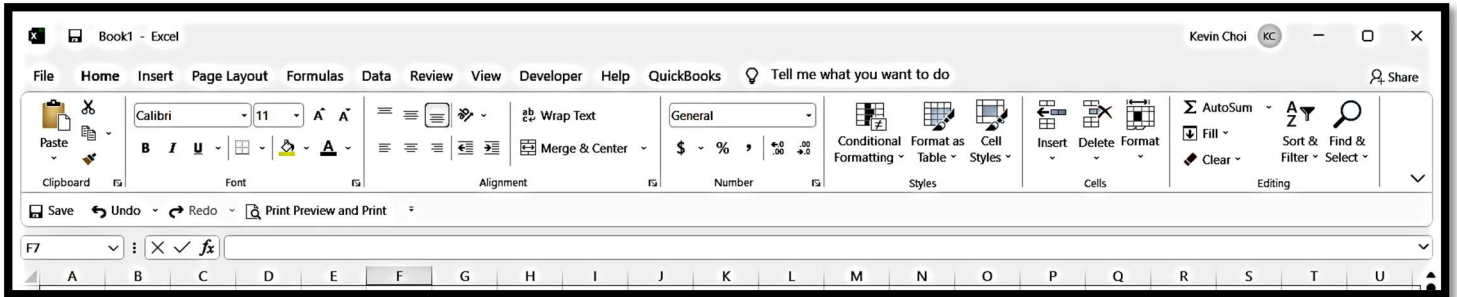


Excel 중급반 Class 1 & 2 예문 Kevin 2022.xlsx

D: » CHOI » STUDY » EXCEL 2022 » 0 ONLINE CLASS 2022 » for Student

엑셀 문서 (Excel Workbook)이 열리면 보이는 첫 화면입니다.

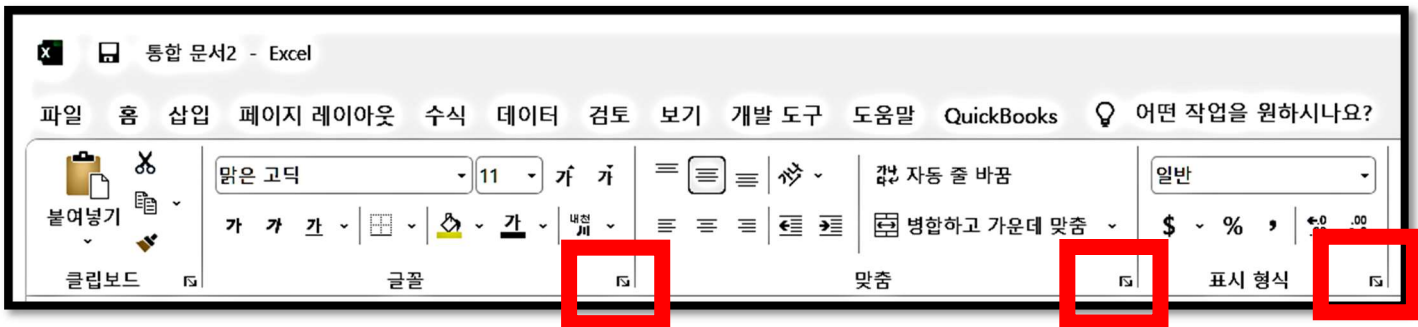
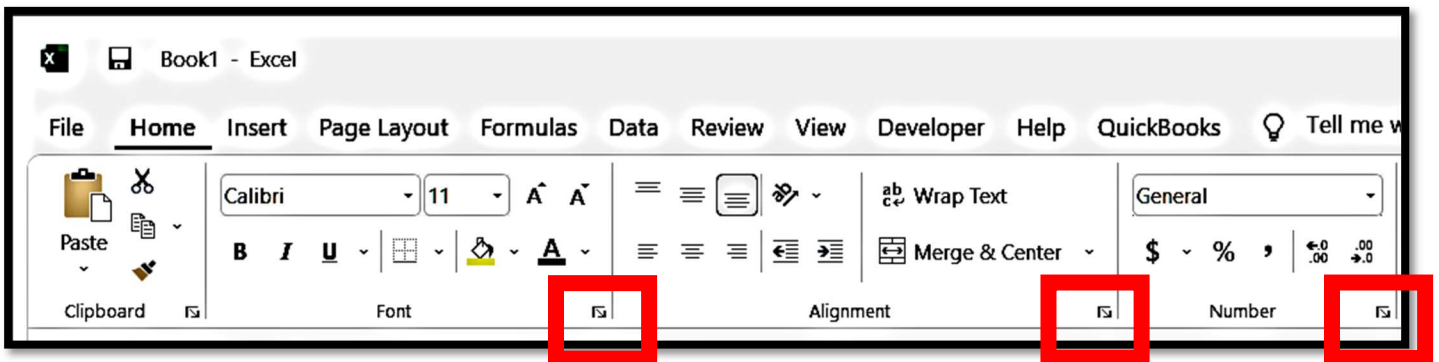
Home Tab (홈 탭)을 클릭했을 때와 같은 Ribbon Menu (리본 메뉴)가 보입니다.



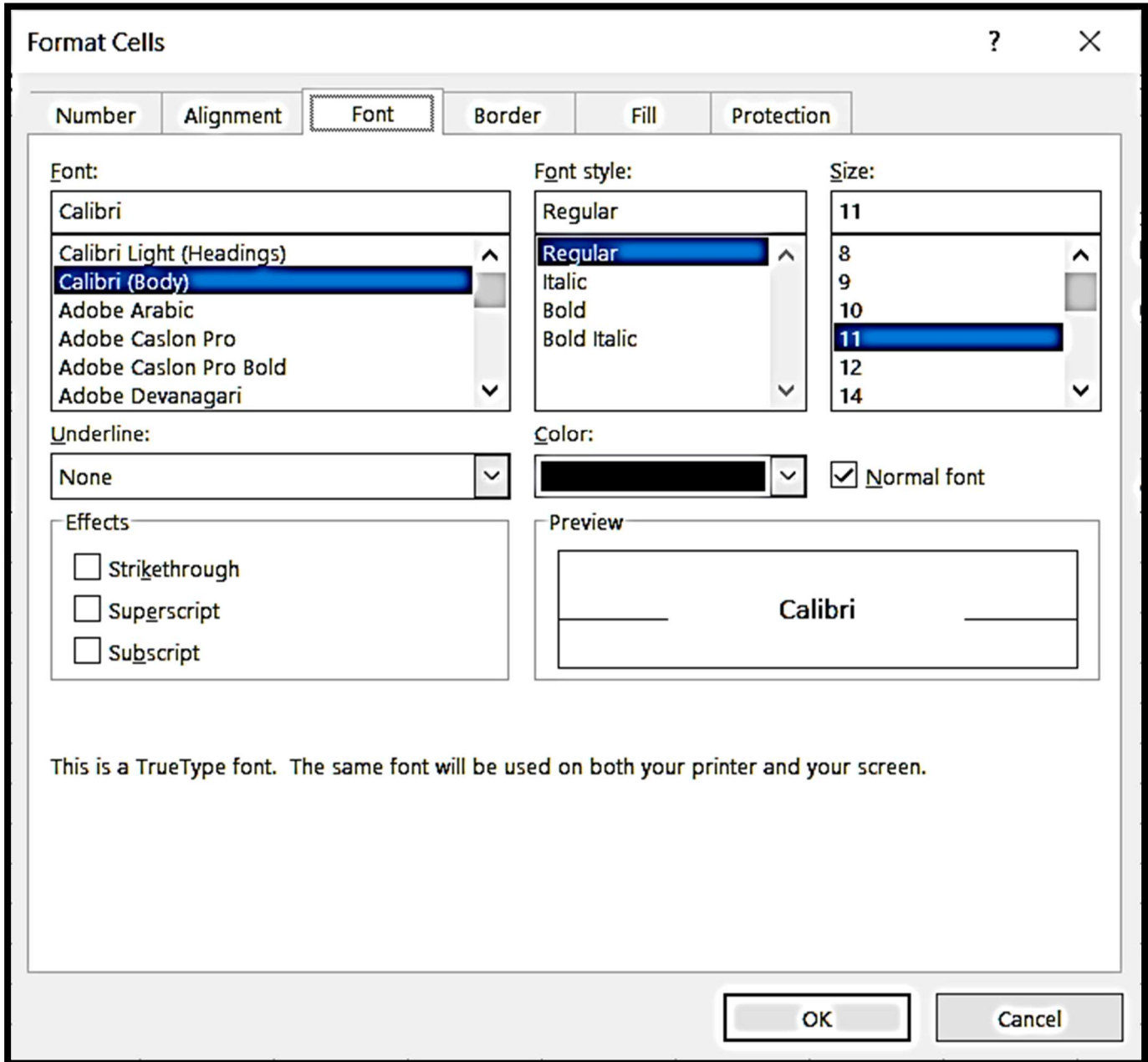
Home Tab 에서 Font, Alignment, Number 셋 중 아무 칸의 오른쪽 하단 코너의 화살표

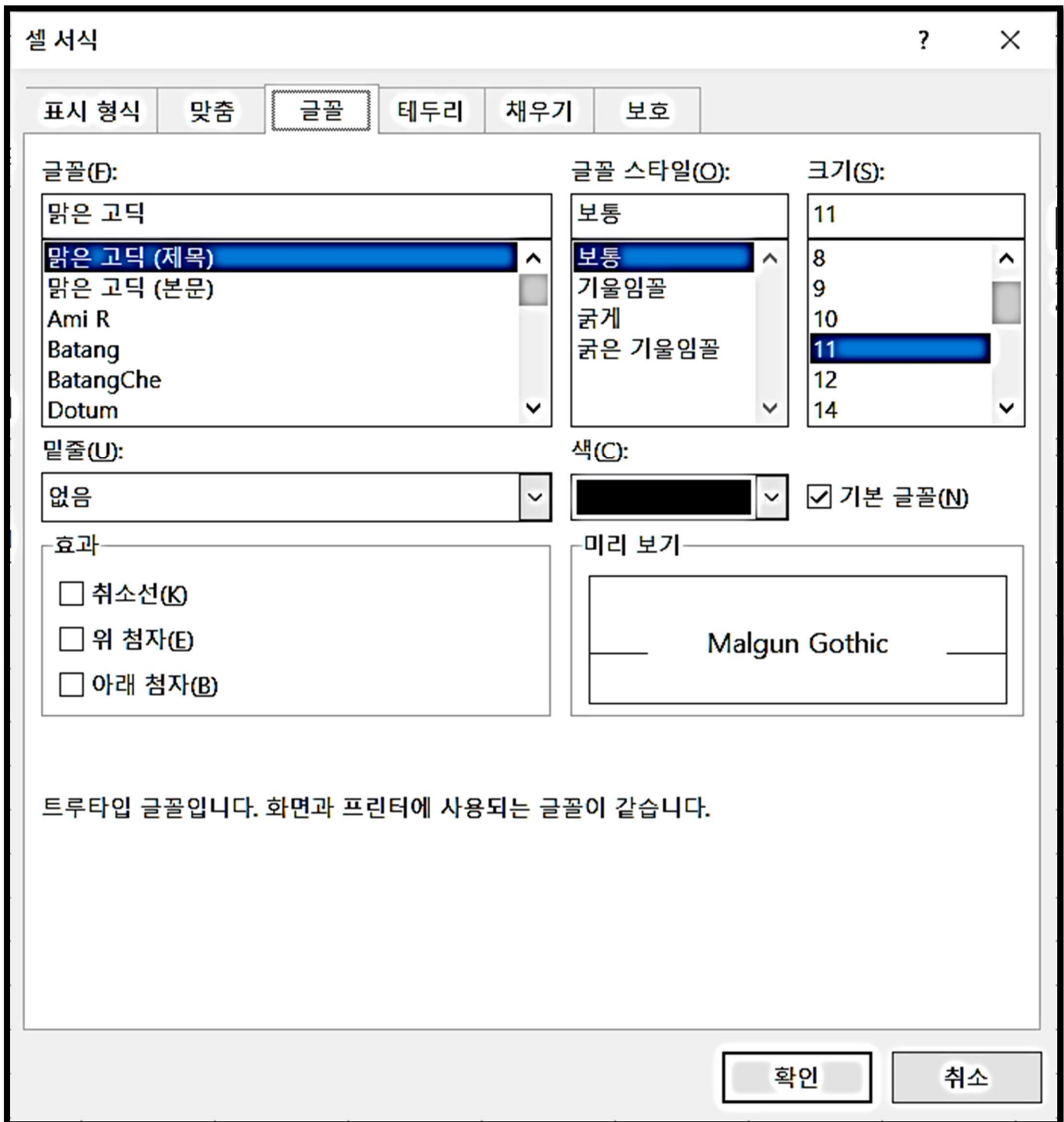


를 클릭하면, 다음 작업 창이 열립니다. 모두 같은 window 입니다.

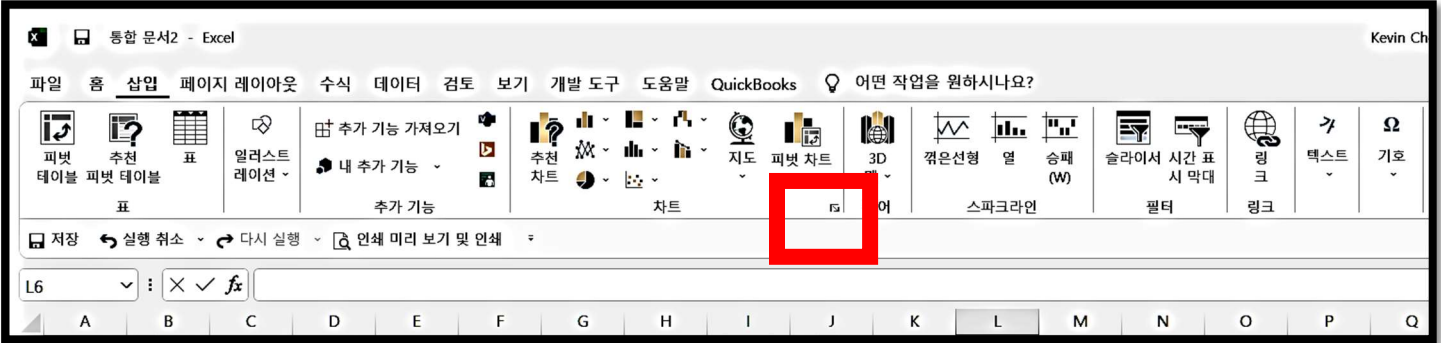
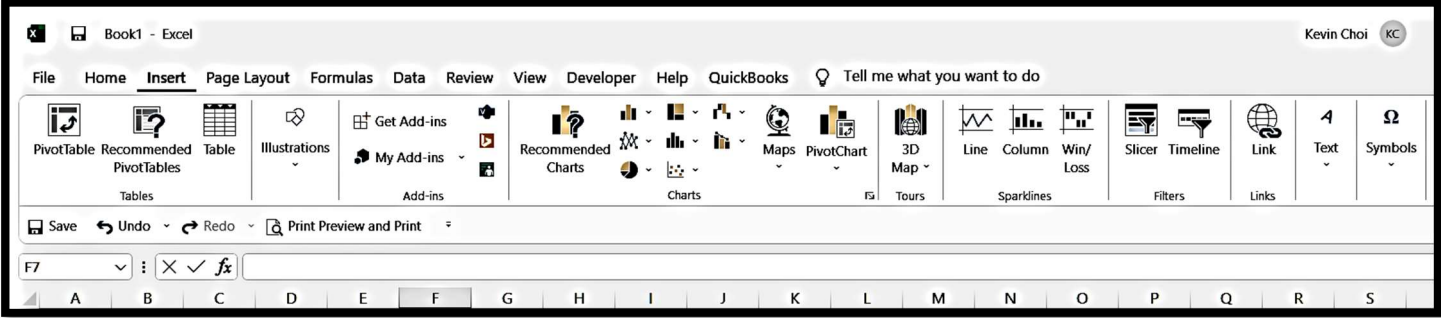


### Format Cells (셀 서식) 작업 창입니다.

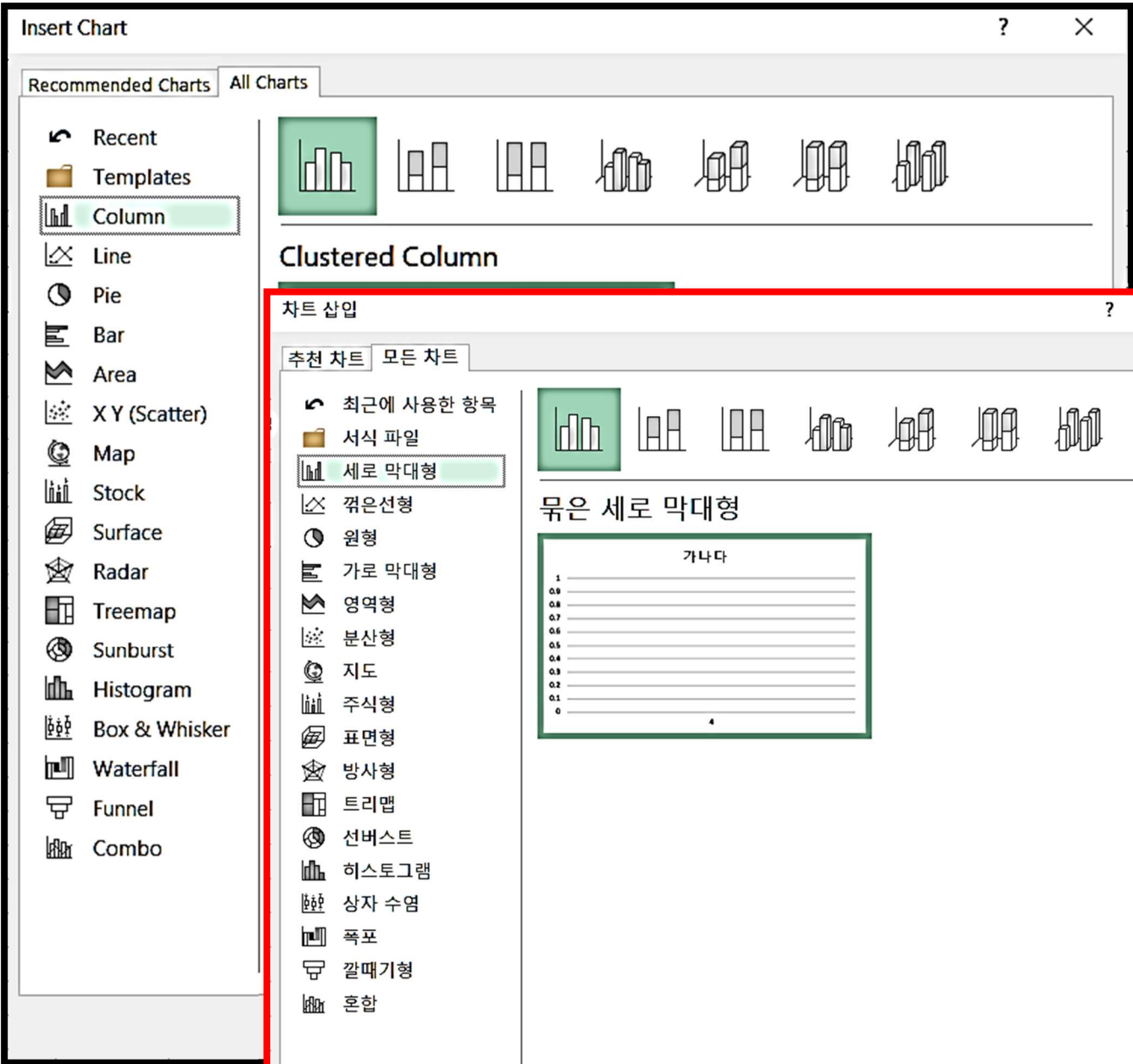




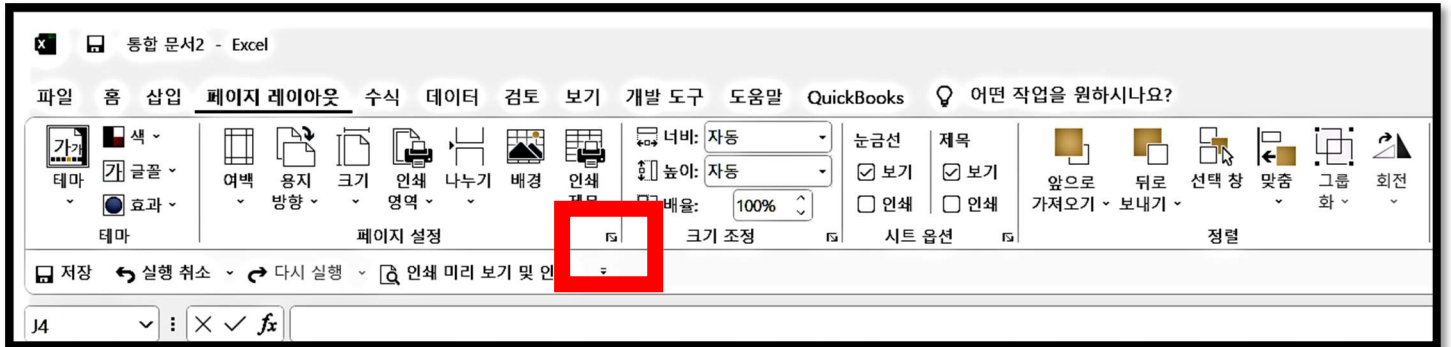
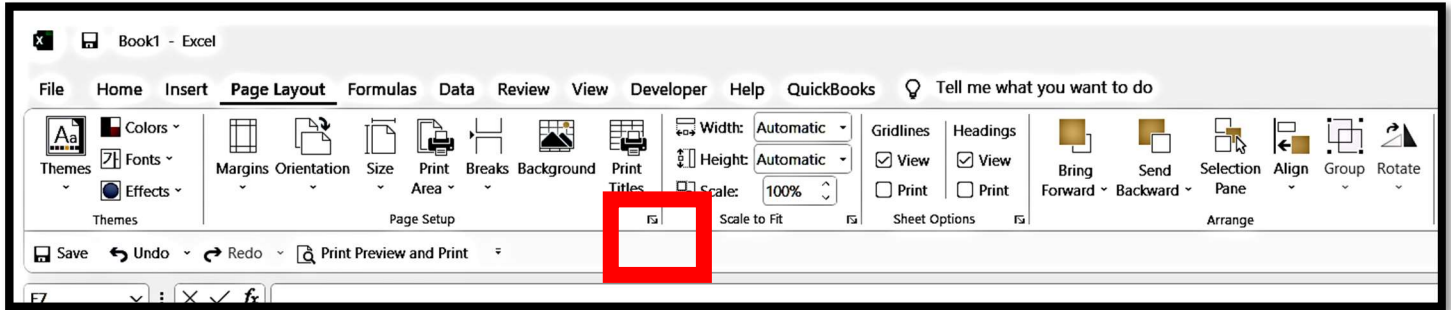
# Insert Tab (삽입 탭)



Charts 칸의 오른쪽 하단 코너의 화살표를 클릭하면, 차트 작업 창 (Insert Chart)이 열립니다.

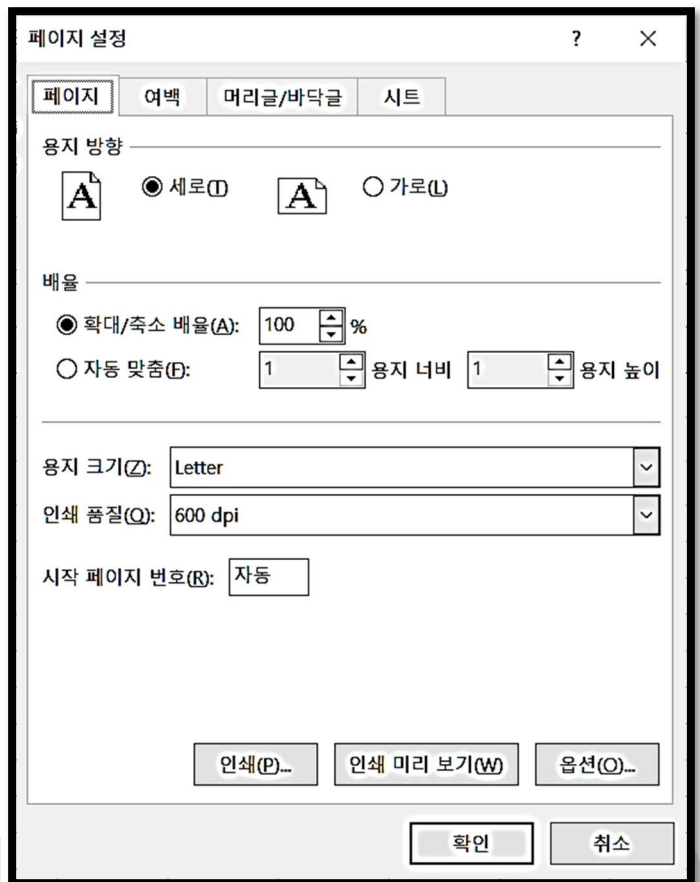
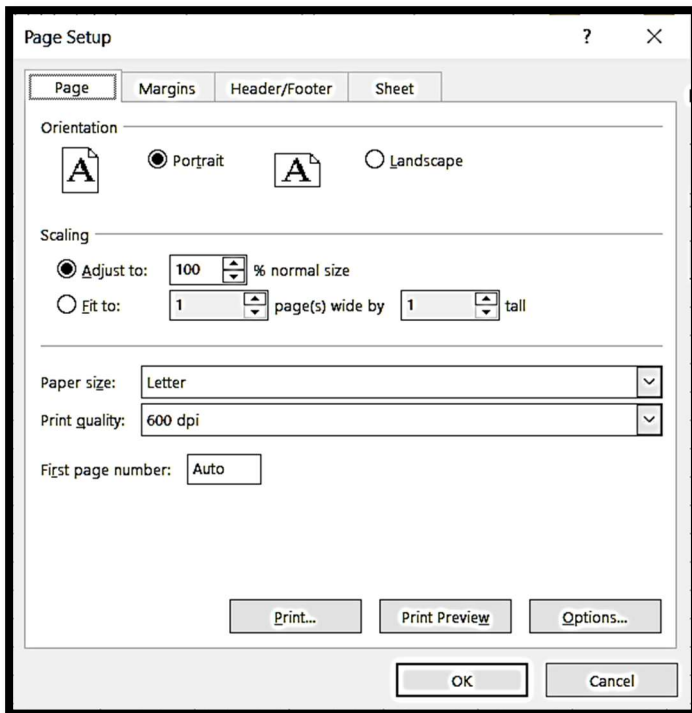


## Page Layout Tab (페이지 레이아웃 탭)

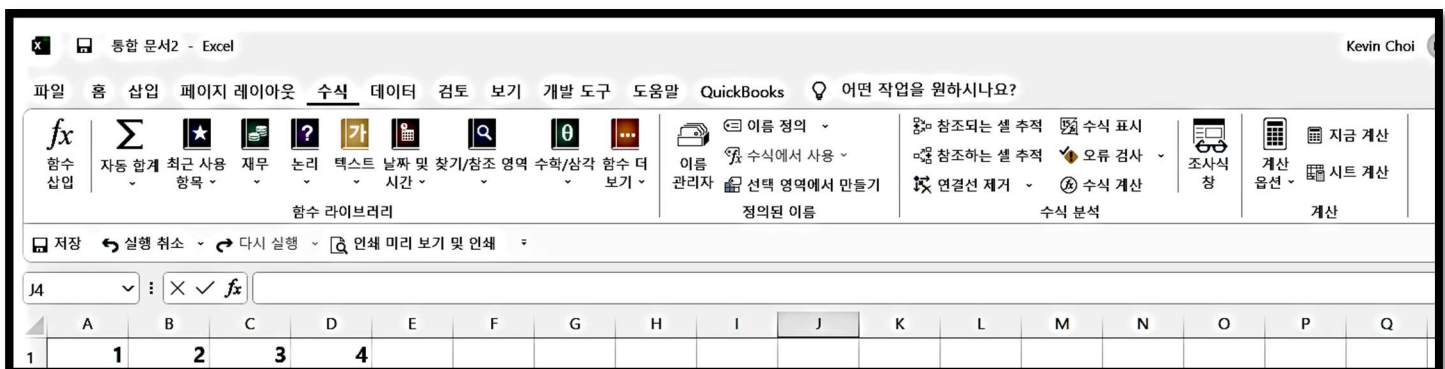
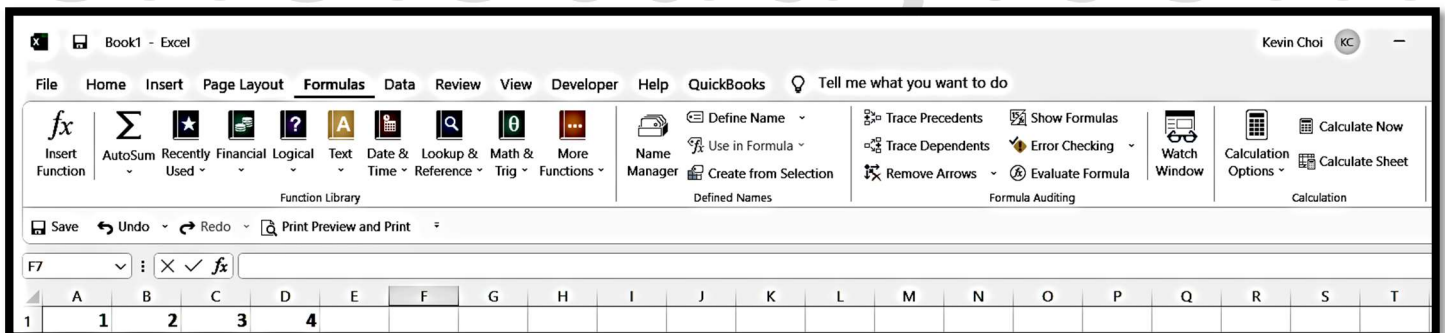


Page Setup, Scale to fit, Sheet Option 의 확장 화살표를 클릭하면, 모두 같은 작업창이 열립니다.

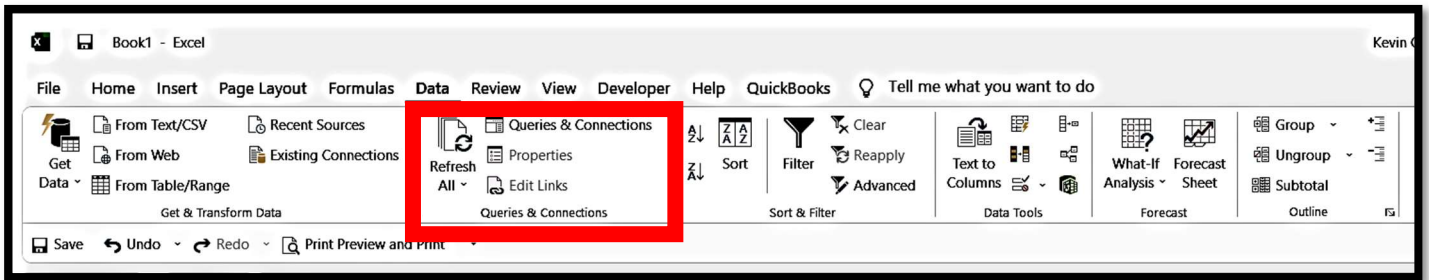




## Formula Tab (수식 탭)

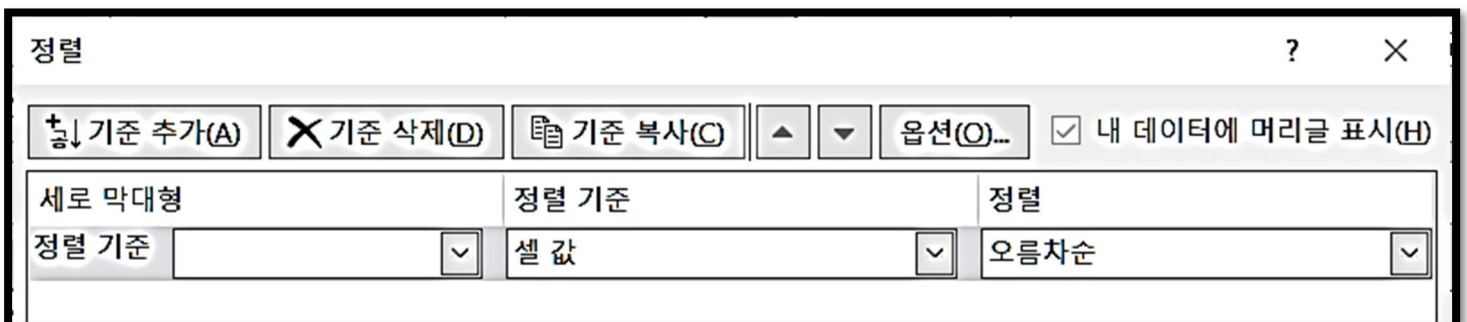
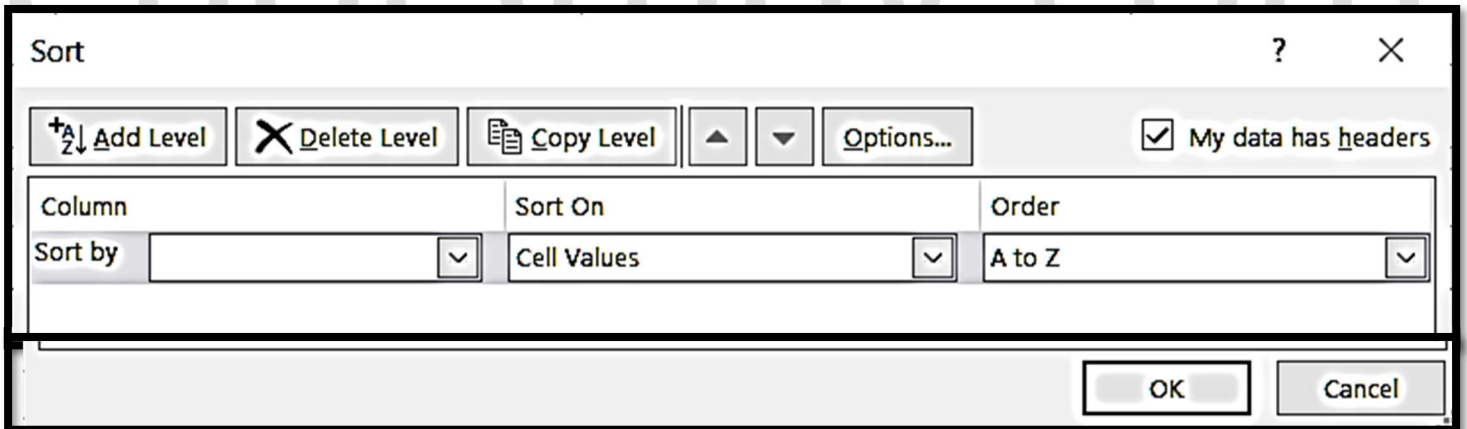


## Data Tab (데이터 탭)

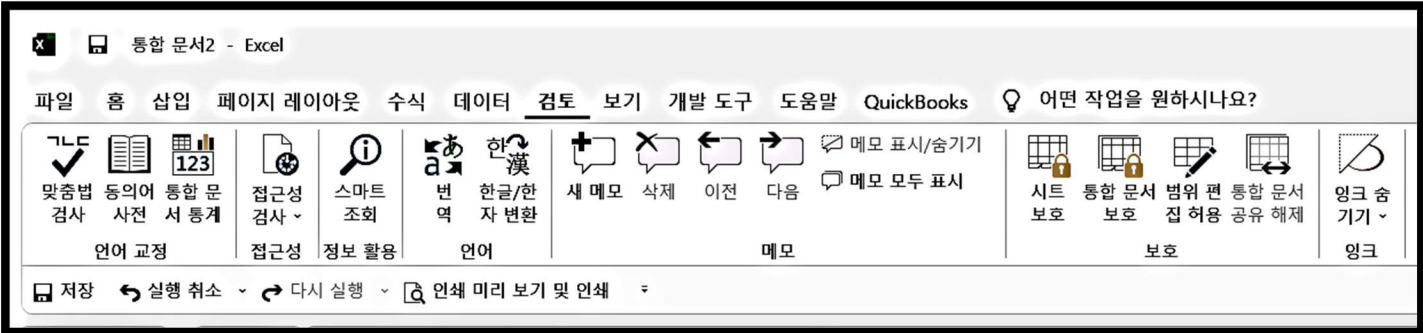
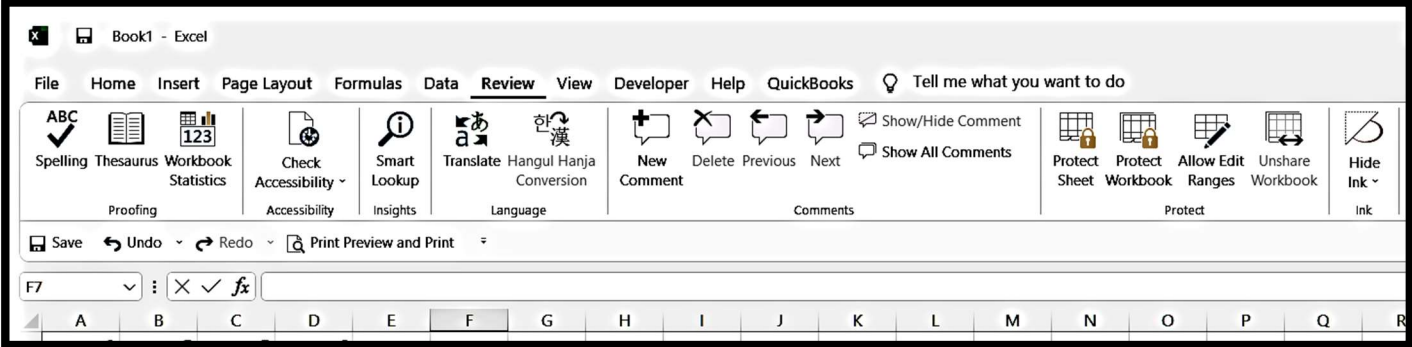


데이터 작업에서 가장 많이 사용되는 Sort & Filter (정렬과 필터) 작업 창입니다.

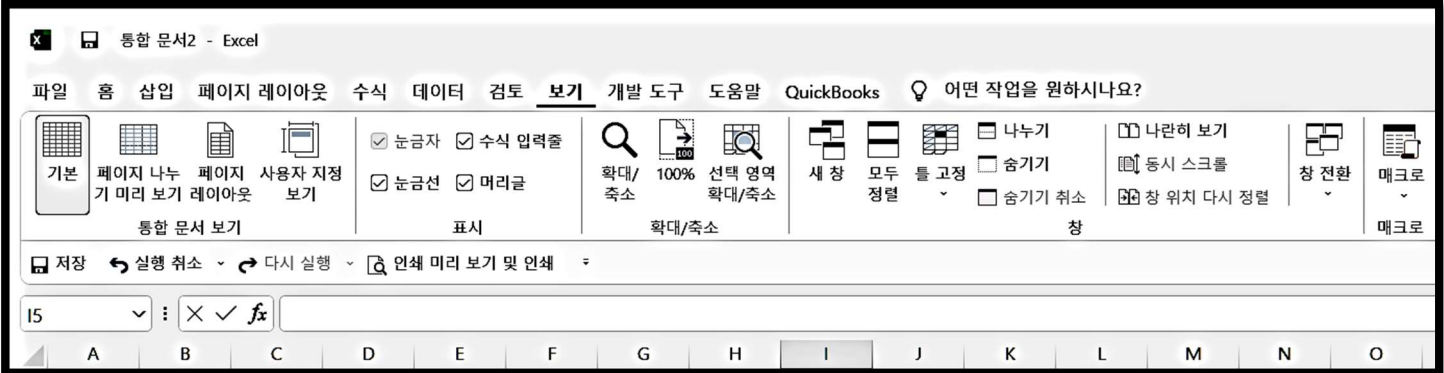
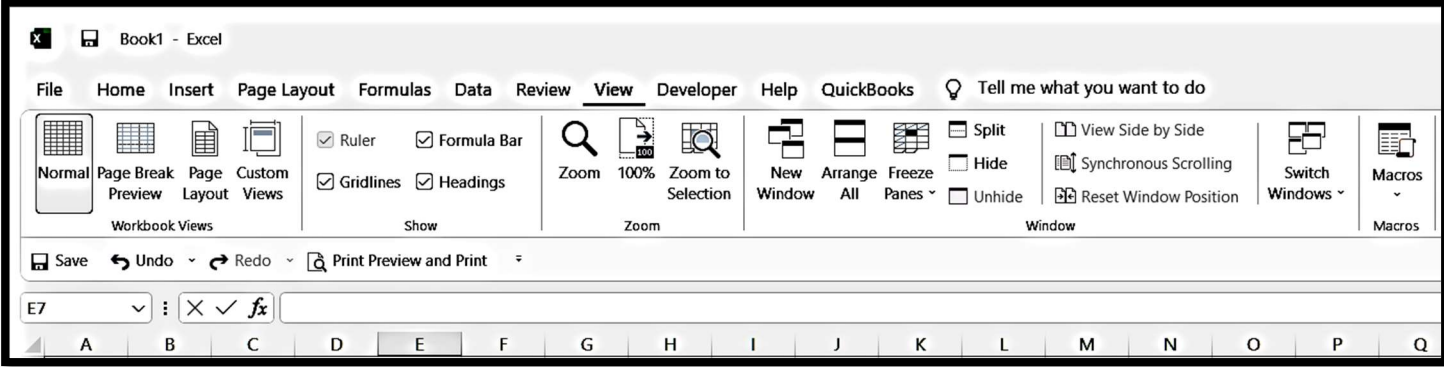
Sort (정렬)을 클릭하면 열립니다.



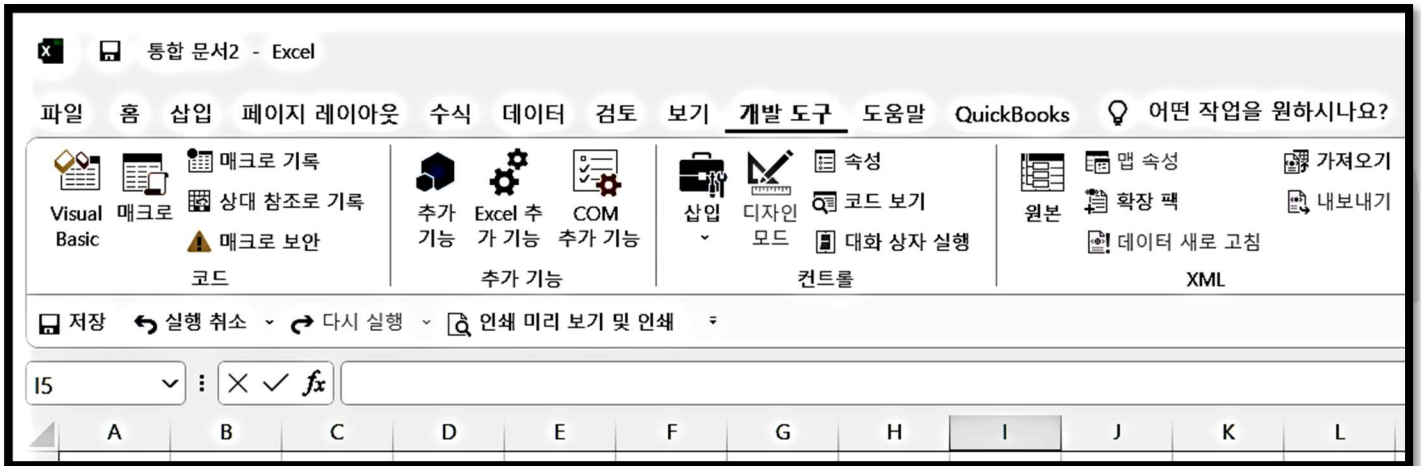
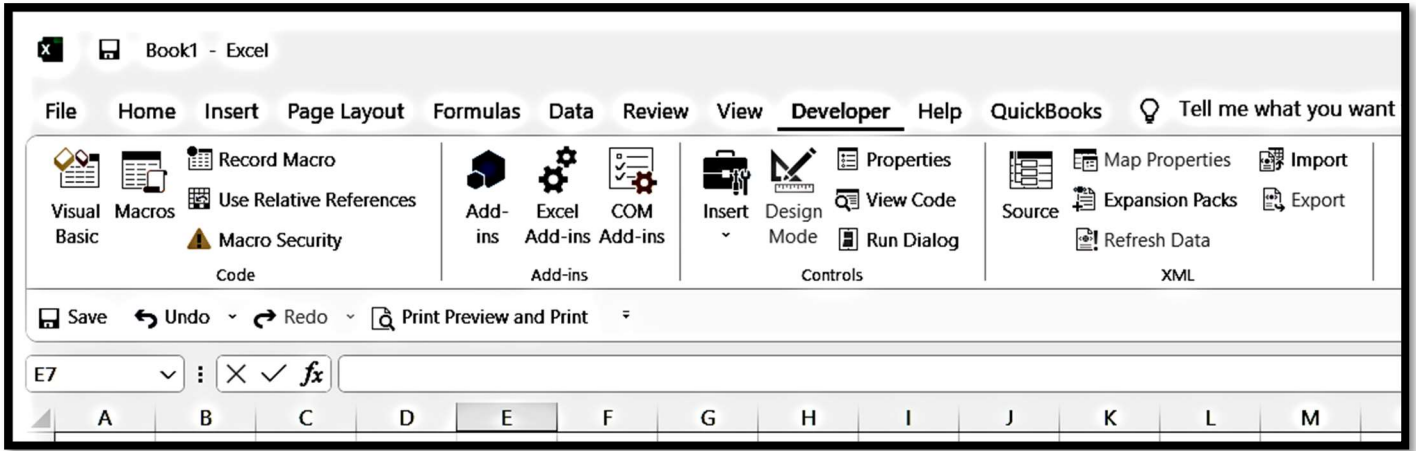
### Review Tab (검토 탭)



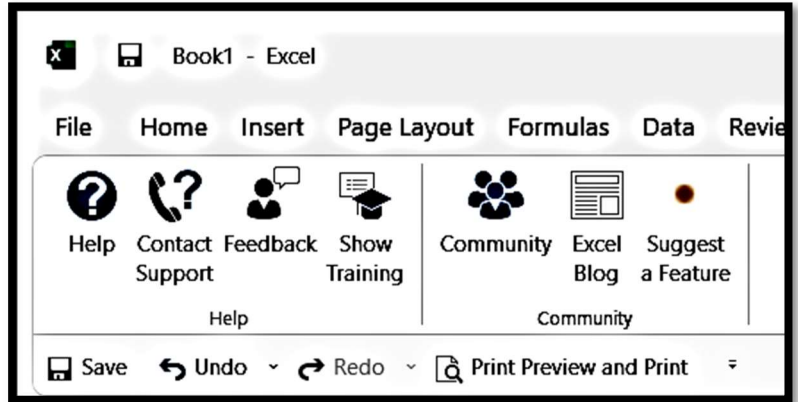
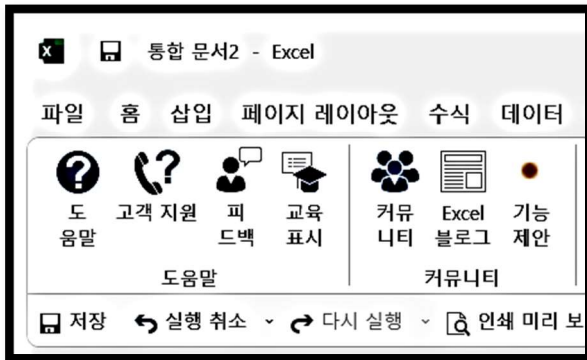
### View Tab (보기 탭)



Developer Tab (개발 도구 탭)은 프로그램 개발자를 위한 메뉴로 특별히 셋팅을 바꾸어야 나타나는 메뉴입니다.



## Help Tab (도움말 탭)



## QuickBooks Tab (퀵북 탭)

회계 프로그램의 데이터와 엑셀 간의 상호 호환 기능입니다.

